

DAIHATSU TYPE CB ENGINE

[CB-23, CB-61 & CB-80]

SECTION 12 EMISSION CONTROL SYSTEM

<p>LIST OF DESTINATIONS 12- 2</p> <p>SCHEMATIC VIEW OF EMISSION CONTROL SYSTEM 12- 3</p> <p>BLOW-BY GAS RECIRCULATION SYSTEM 12-20</p> <p style="padding-left: 20px;">INSPECTION 12-22</p> <p>CHOKE OPENER SYSTEM 12-22</p> <p style="padding-left: 20px;">SYSTEM CHECK 12-23</p> <p style="padding-left: 20px;">UNIT CHECK 12-23</p> <p>ASHPOT SYSTEM 12-24</p> <p style="padding-left: 20px;">SYSTEM CHECK 12-25</p> <p style="padding-left: 20px;">UNIT CHECK 12-25</p> <p>FUEL EVAPORATIVE EMISSION CONTROL SYSTEM 12-25</p> <p style="padding-left: 20px;">CHARCOAL CANISTER 12-26</p> <p style="padding-left: 20px;">INSPECTION 12-26</p> <p>MAIN AIR BLEED 12-26</p> <p style="padding-left: 20px;">OPERATION CHECK OF VCV 12-27</p> <p>SECONDARY AIR SUCTION SYSTEM (AS SYSTEM) 12-27</p> <p style="padding-left: 20px;">CHECKING OF SECONDARY AIR SUCTION SYSTEM 12-27</p> <p style="padding-left: 20px;">AIR SUCTION FILTER ELEMENT 12-28</p> <p>EGR (EXHAUST GAS RECIRCULATING) SYSTEM 12-28</p> <p style="padding-left: 20px;">EGR SYSTEM CHECK 12-28</p> <p style="padding-left: 20px;">UNIT INSPECTION 12-29</p>	<p>CHOKE WARNING SYSTEM 12-30</p> <p style="padding-left: 20px;">CHECK 12-30</p> <p>FUEL CUT SYSTEM DURING DECELERATION 12-31</p> <p style="padding-left: 20px;">OPERATING CONDITIONS OF SYSTEM 12-31</p> <p style="padding-left: 20px;">SYSTEM CHECK 12-32</p> <p style="padding-left: 20px;">UNIT CHECK 12-32</p> <p style="padding-left: 20px;">VACUUM SWITCH 12-32</p> <p>OUTER VENT SYSTEM 12-33</p> <p style="padding-left: 20px;">UNIT CHECK 12-34</p> <p>IGNITION TIMING CONTROL SYSTEM CHECK [CB-23 Engine] 12-35</p> <p style="padding-left: 20px;">MAIN SIDE 12-35</p> <p style="padding-left: 20px;">SUB SIDE 12-35</p> <p style="padding-left: 20px;">UNIT CHECK 12-36</p> <p>IGNITION TIMING CONTROL SYSTEM CHECK [CB-61 Engine] 12-37</p> <p style="padding-left: 20px;">IGNITION TIMING CONTROL SYSTEM CHECK 12-37</p> <p style="padding-left: 20px;">UNIT CHECK 12-38</p> <p style="padding-left: 20px;">CHECK AND ADJUSTMENT OF IGNITION TIMING 12-38</p>
---	---

12

EMISSION CONTROL SYSTEM

LIST OF DESTINATIONS

Engine type Destination Transmission type	Blow-by gas recirculating system	Choke warning	Ignition timing control system	Choke opener	Dashpot	Outer vent system	Fuel cut during deceleration	Secondary air suction	Catalyst	Main air bleeder	Exhaust gas recirculating system	Fuel evaporative emission control system
CB-23	General specifications Manual transmission	○	—	○	—	—	—	—	—	—	—	—
	General specifications Automatic transmission	○	—	○	—	—	—	—	—	—	—	—
	Australian specifications Manual transmission	○	○	○	○	○	○	○	○	—	—	○
	Australian specifications Automatic transmission	○	○	○	○	○	○	○	○	—	—	○
	ECE & EEC specifications Manual transmission	○	○	○	○	○	—	—	—	—	—	—
	ECE & EEC specifications Automatic transmission	○	○	○	○	—	—	—	—	—	—	—
	Saudi Arabian (GCC) specifications Manual transmission	○	—	○	○	○	—	—	—	—	—	—
	Saudi Arabian (GCC) specifications Automatic transmission	○	—	○	○	—	—	—	—	—	—	—
	Singapore specifications Manual transmission	○	—	○	○	○	—	—	—	—	—	—
	Singapore specifications Automatic transmission	○	—	○	○	—	—	—	—	—	—	—
	Swedish specifications Manual transmission	○	○	○	○	○	—	—	—	—	—	—
Swiss specifications Manual transmission	○	○	○	○	○	—	○	○	○	—	—	
CB-61	General specifications Manual transmission	○	—	○	—	—	—	—	—	—	—	—
	Australian specifications Manual transmission	○	○	○	○	○	○	○	○	○	—	○
	ECE & EEC specifications Manual transmission	○	○	○	○	○	—	—	—	—	—	—
	Singapore specifications Manual transmission	○	○	○	○	○	—	—	—	—	—	—
	Swedish specifications Manual transmission	○	○	○	○	○	—	—	—	—	—	—
	West German specifications Manual transmission	○	○	○	○	○	—	○	○	○	—	—
CB-80	All specifications Manual transmission	○	○	Electronic timing advance	—	—	—	—	—	—	—	○
CL-11	All specifications Manual transmission	○	—	—	—	—	—	—	—	—	—	—
CL-61	All specifications Manual transmission	○	—	—	—	—	—	—	—	—	—	—

WM-12002

SCHEMATIC VIEW OF EMISSION CONTROL SYSTEMS

General Specifications with CB-23 Engine and Manual Transmission

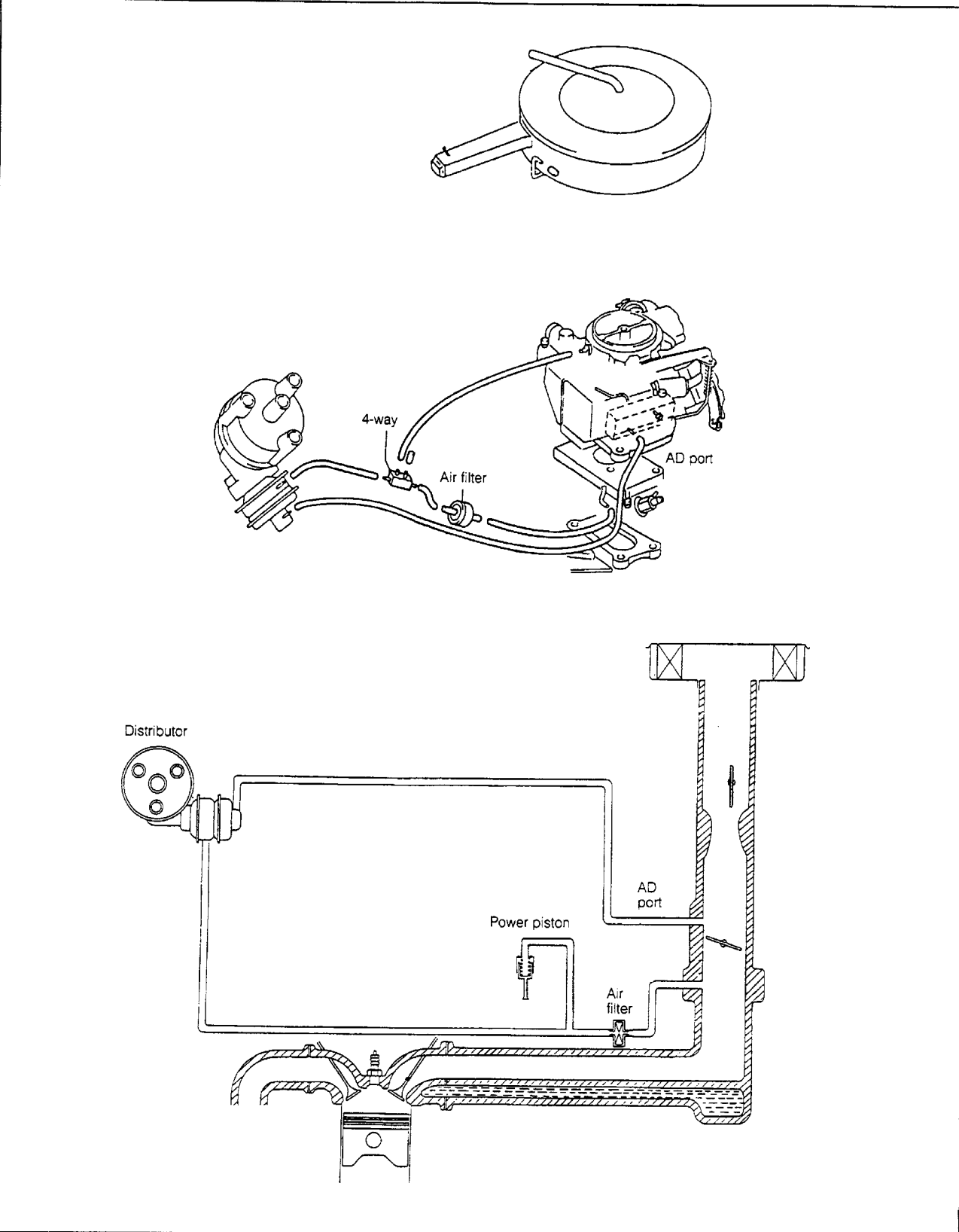


Fig. 12-1

WM-12003

EMISSION CONTROL SYSTEM

General Specifications with CB-23 Engine and Automatic Transmission

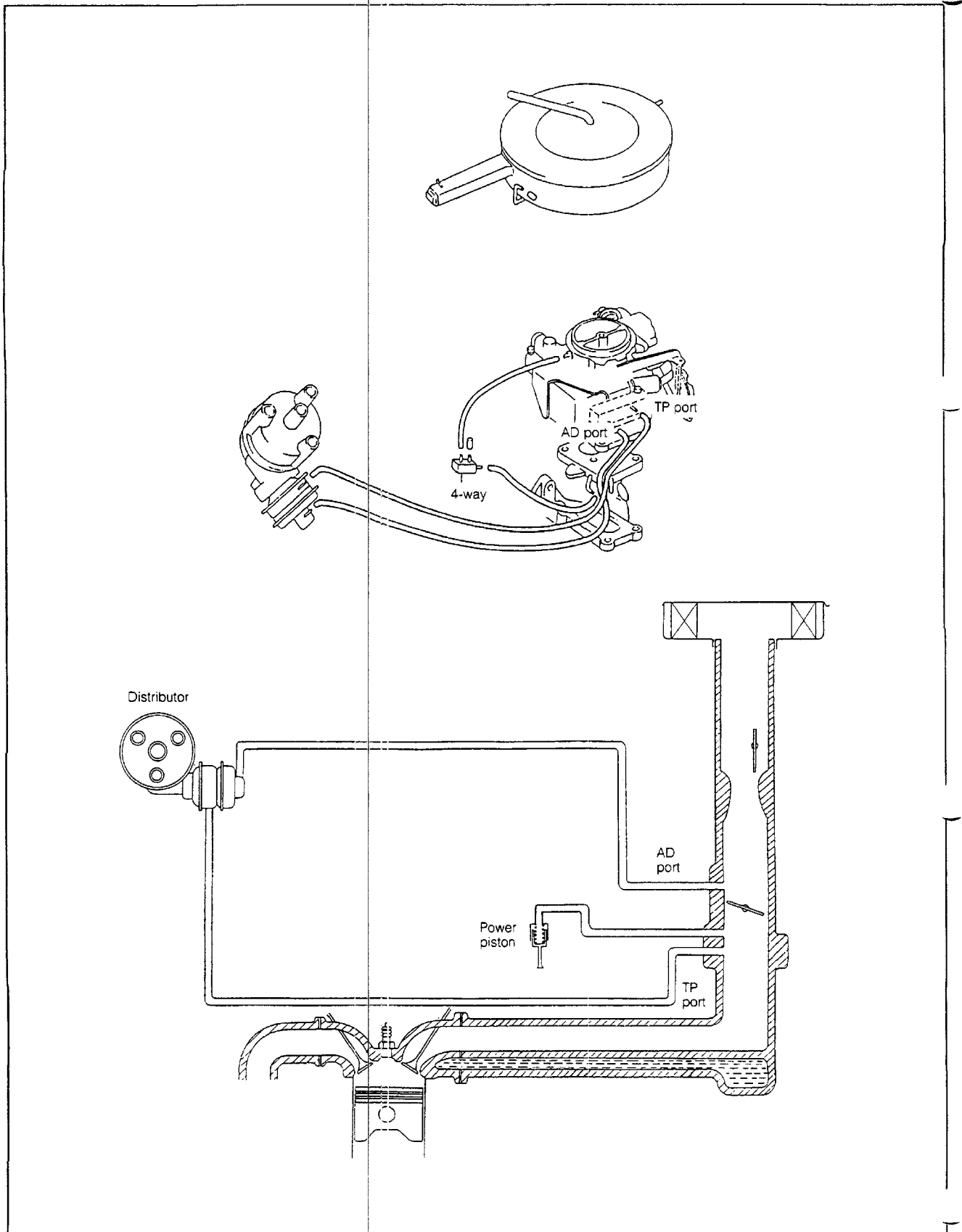


Fig. 12-2

WM-12004

EMISSION CONTROL SYSTEM

Australian Specifications with CB-23 Engine and Automatic Transmission

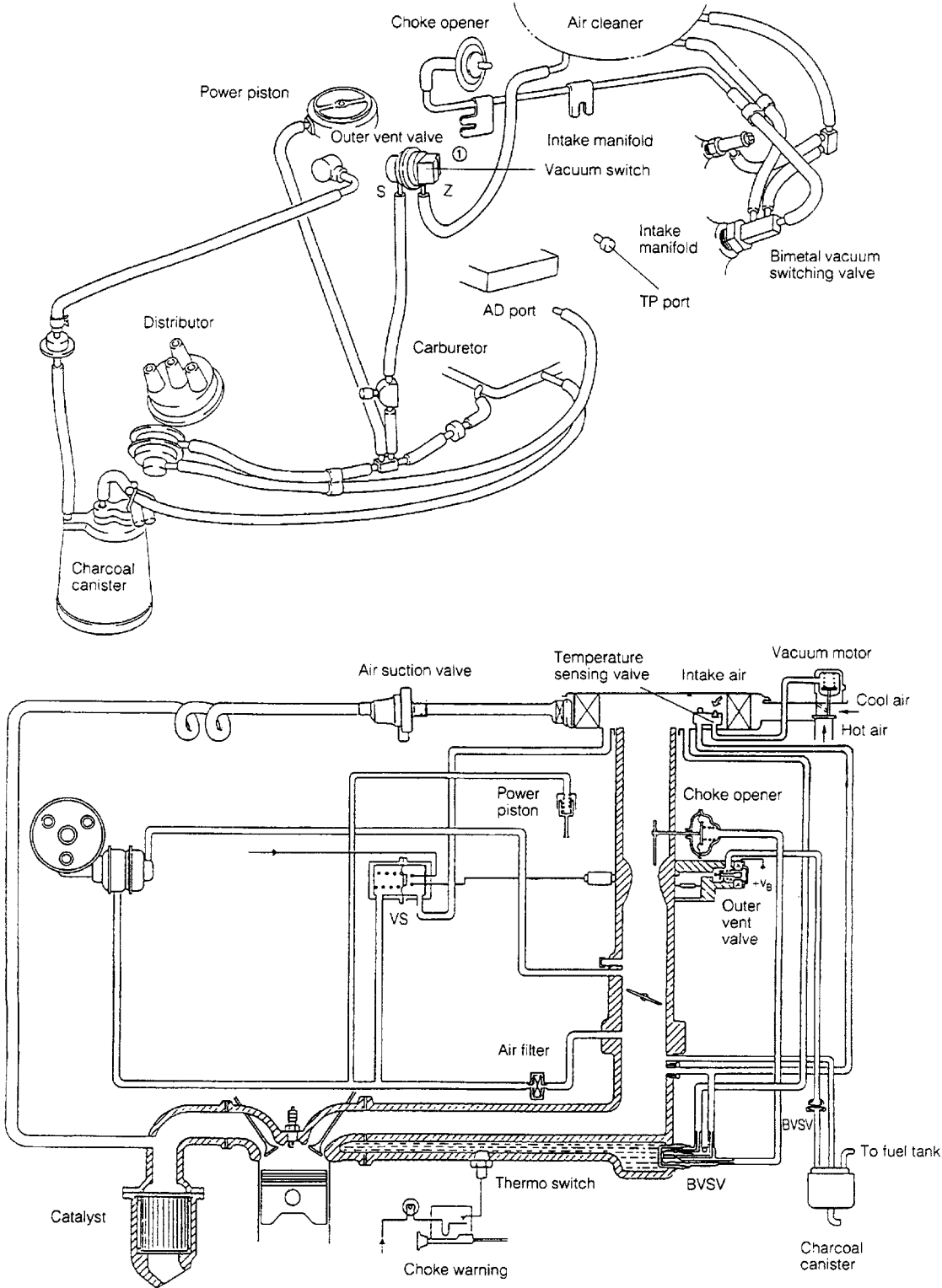


Fig. 12-3

WM-12005

EMISSION CONTROL SYSTEM

Australian Specifications with CB-23 Engine and Manual Transmission

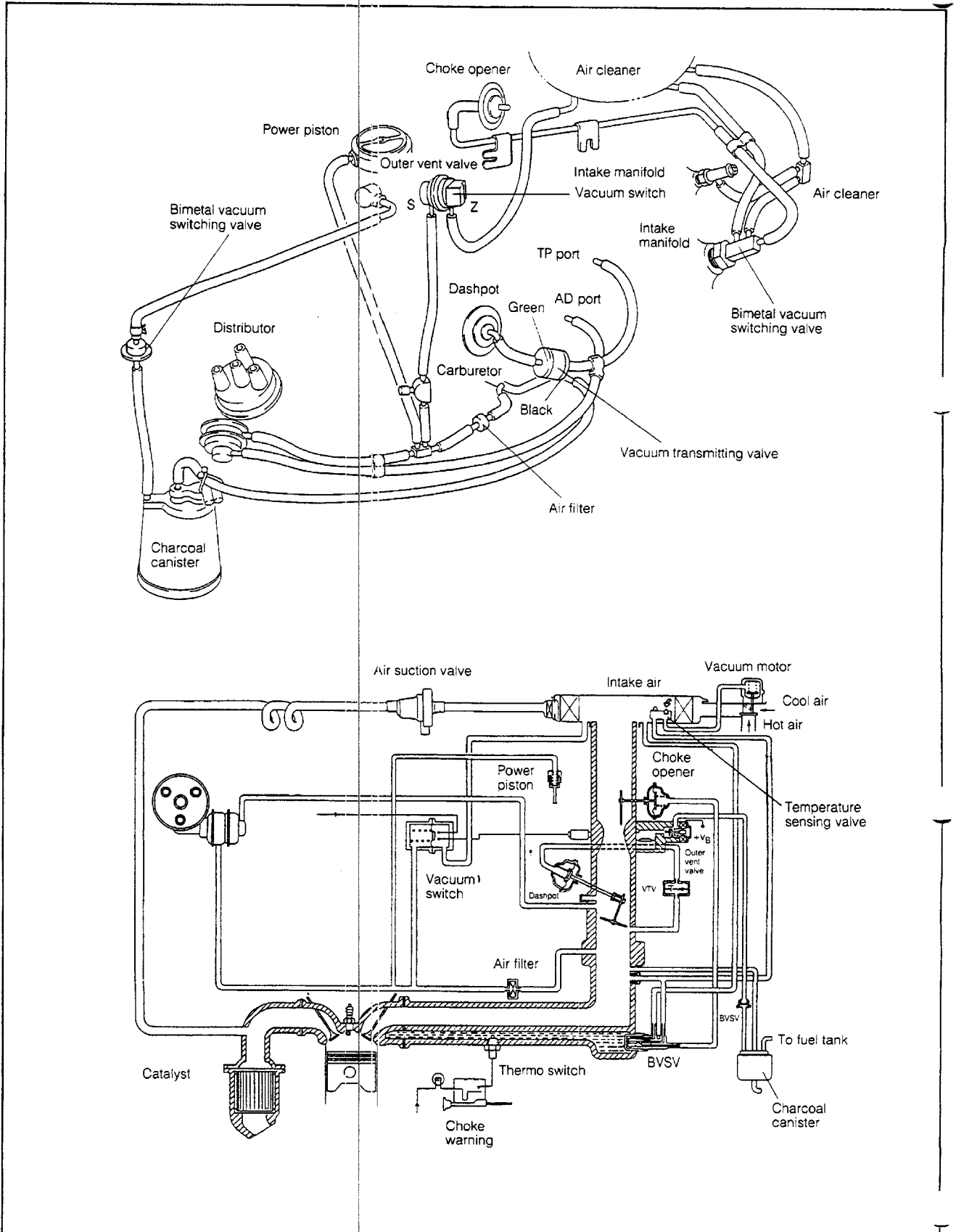


Fig. 12-4

WM-12006

EMISSION CONTROL SYSTEM

CE & EEC Specifications with CB-23 Engine and Manual Transmission

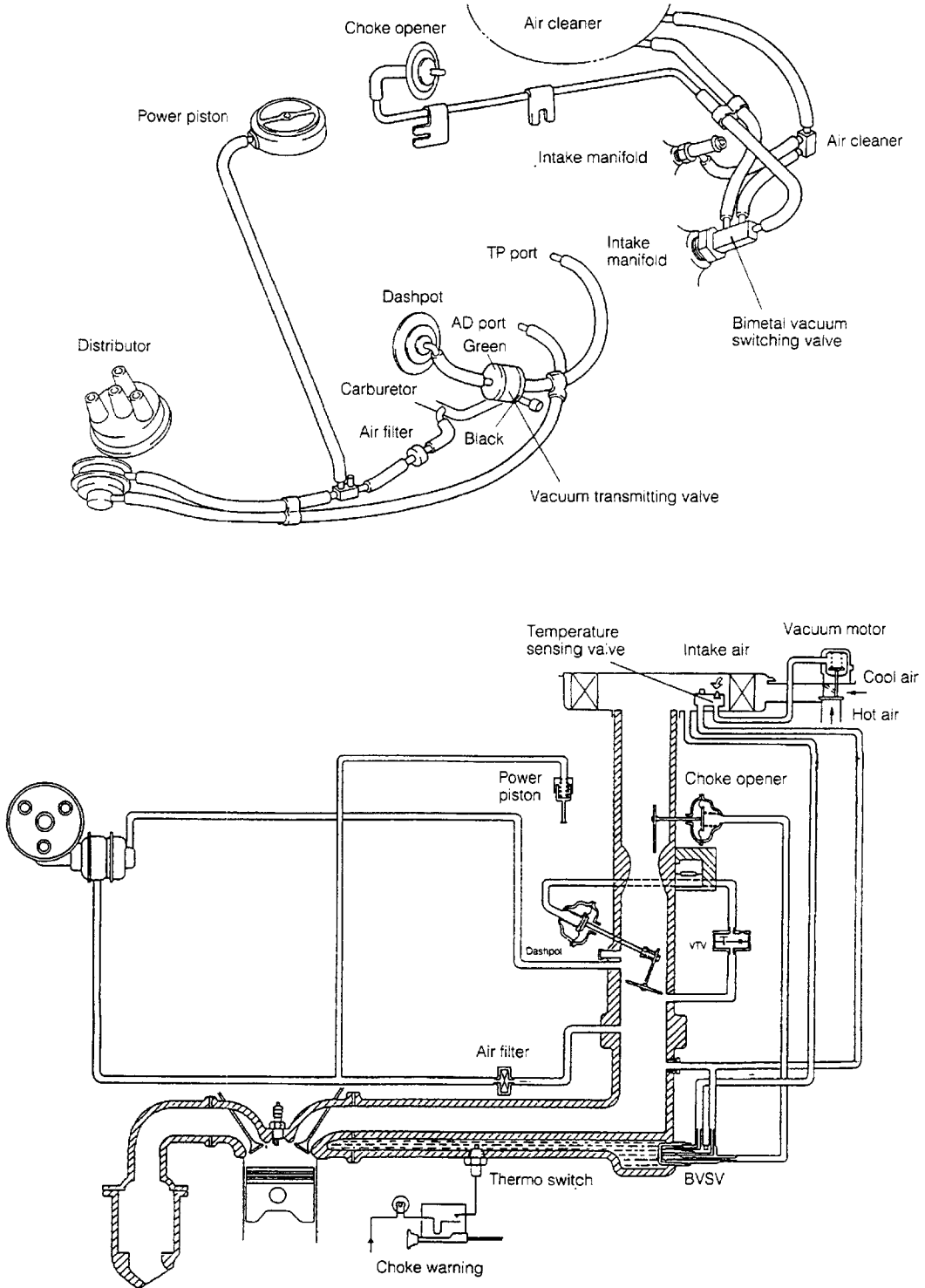


Fig. 12-5

WM-12007

EMISSION CONTROL SYSTEM

ECE & EEC Specifications with CB-23 Engine and Automatic Transmission

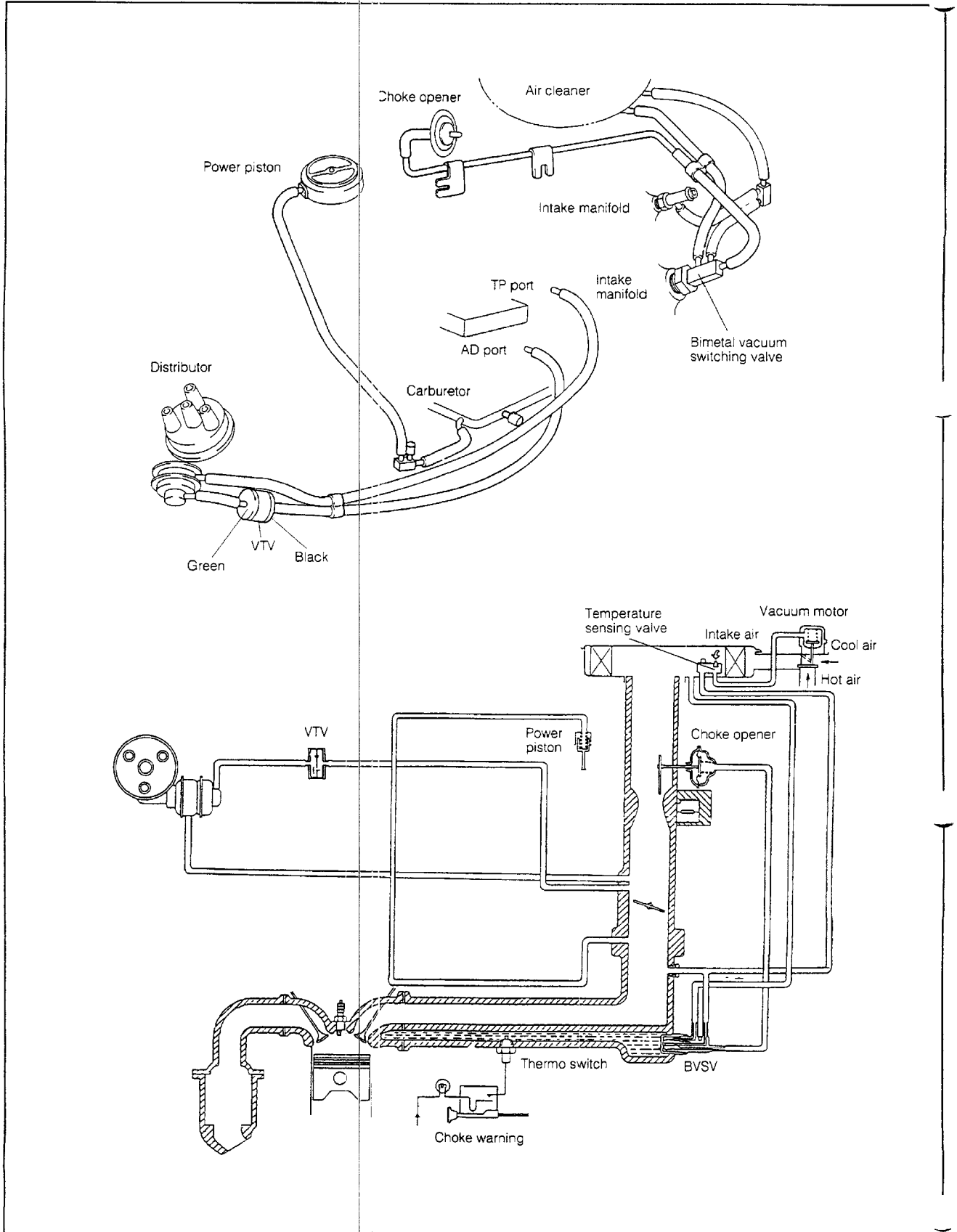


Fig. 12-6

WM-12008

EMISSION CONTROL SYSTEM

Saudi Arabian (GCC) Specifications with CB-23 Engine and Manual Transmission

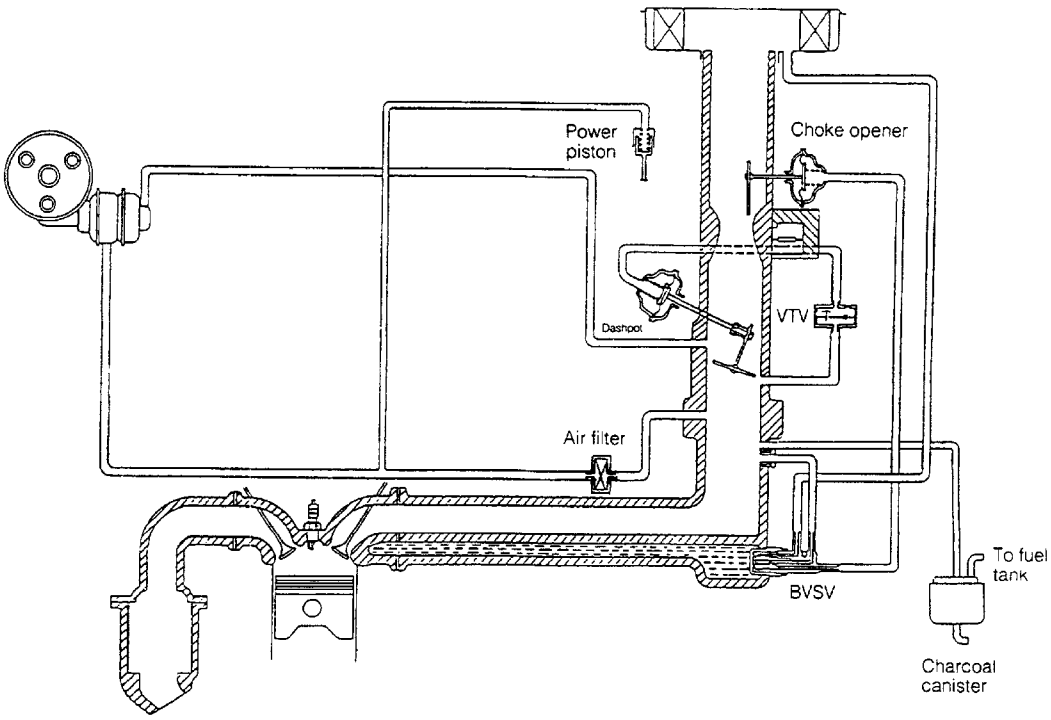
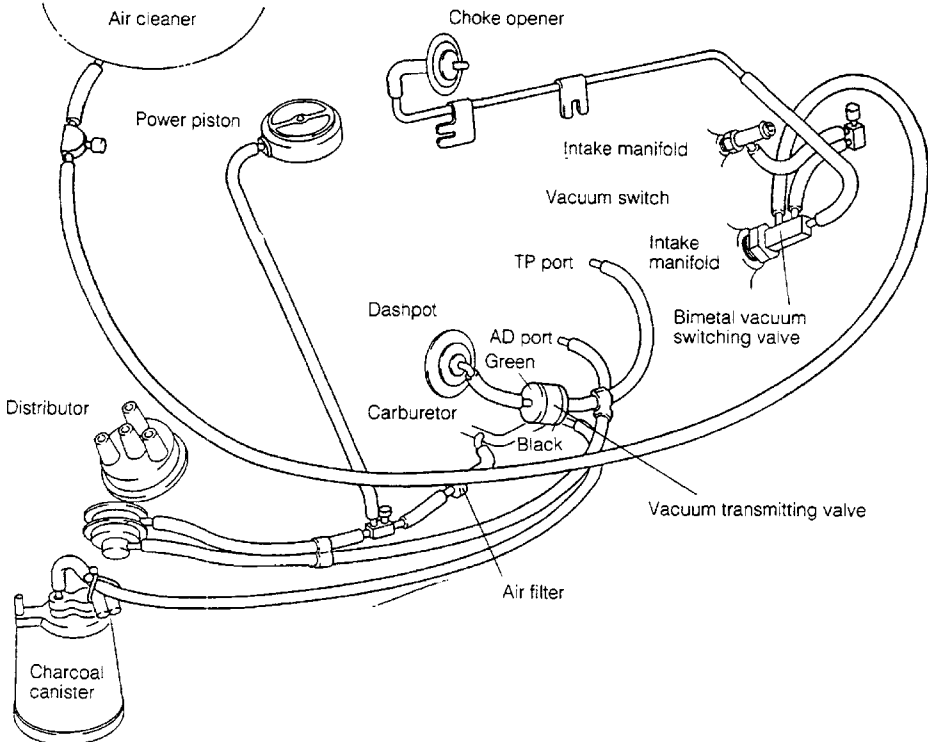


Fig. 12-7

WM-12009